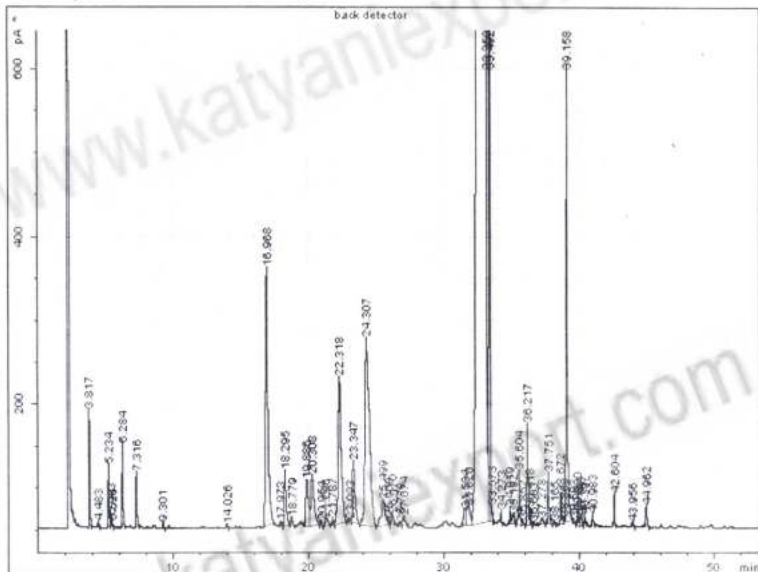




Katyani Exports

Exporter & Manufacturers : Natural Essential Oils, Spice Oils,
Aroma Therapy Oils & Allied Products

Sample name: Carrot Seed Oil
Sample note:
Submission time: Tuesday, May 07, 2013 12:14:09 PM
Operator:
Injection date: Tuesday, May 07, 2013 12:14:16 PM
GC Description: mp - SN: CN10927001
Signal description: FID1 B, back detector
Method: Back Fid 020210
Method last saved: Tuesday, July 17, 2012 5:36:47 PM



Area Percent Report

Calibration last saved:	Tuesday, May 31, 2011 7:14:48 PM
Multiplier:	1.0000
Dilution:	1.0000
Sample amount:	0.0000 µL
Sample type:	Sample
Sampling source:	Manual

Signal	Retention Time [min]	Type	Width [min]	Area [pA*s]	Area %
1	3.817	BB	0.049	471.52511	0.36467
1	4.483	PB	0.052	27.85509	0.02154
1	5.234	BV	0.065	341.10972	0.26381
1	5.443	VV	0.059	58.26487	0.04506
1	5.526	VB	0.064	31.22806	0.02415
1	6.284	PB	0.067	447.94043	0.34643
1	7.316	PB	0.076	332.98580	0.25753
1	9.301	PB	0.074	32.97928	0.02551
1	14.026	PB	0.072	22.01490	0.01703
1	16.968	PB	0.163	3853.28713	2.98010
1	17.973	PP	0.078	33.23768	0.02571
1	18.295	BB	0.126	614.54659	0.47529
1	18.779	PP	0.123	84.45886	0.06532
1	19.886	PV	0.190	762.39771	0.58963
1	20.308	VB	0.200	994.02767	0.76877
1	20.954	PP	0.081	37.09155	0.02869
1	21.296	PB	0.174	143.25257	0.11079
1	21.787	PP	0.073	44.43920	0.03437
1	22.318	BP	0.196	2730.63641	2.11185
1	23.093	PV	0.066	12.08712	0.00935
1	23.347	VB	0.170	1000.09786	0.77347
1	24.307	BB	0.274	5034.41853	3.89358
1	25.499	BV	0.257	648.02828	0.50118
1	25.908	VP	0.077	51.90451	0.04014
1	26.170	PB	0.156	147.27340	0.11390
1	26.778	PV	0.088	24.09975	0.01864
1	27.074	VB	0.156	131.59644	0.10178
1	31.584	BV	0.174	262.27574	0.20284
1	31.820	VV	0.219	415.28108	0.32117
1	33.250	VV	0.354	9.8312e+004	76.03335
1	33.492	VV	0.082	5389.83399	4.16845
1	33.573	VB	0.062	89.65806	0.06934

1	34.273	BP	0.060	55.79510	0.04315
1	34.919	BV	0.080	116.07521	0.08977
1	35.192	VV	0.144	143.13585	0.11070
1	35.604	VV	0.092	417.59329	0.32296
1	35.852	VP	0.090	34.88370	0.02698
1	36.217	BV	0.078	650.59861	0.50317
1	36.418	VP	0.074	98.46926	0.07616
1	36.683	VB	0.053	10.05173	0.00777
1	37.278	BP	0.155	89.68800	0.06936
1	37.751	BB	0.097	418.29377	0.32350
1	38.165	PP	0.072	17.34524	0.01341
1	38.672	PV	0.094	236.38873	0.18282
1	38.859	VV	0.092	51.82939	0.04008
1	39.158	VB	0.094	3597.22500	2.78206
1	39.593	PP	0.060	19.22273	0.01487
1	39.900	PV	0.106	106.26460	0.08218
1	40.148	VP	0.115	94.65555	0.07321
1	40.397	VB	0.089	66.95147	0.05178
1	40.983	PB	0.088	84.35281	0.06524
1	42.604	BB	0.074	188.48959	0.14578
1	43.956	PB	0.102	36.74055	0.02841
1	44.962	PB	0.117	185.12782	0.14318

Total Area = 129300.57188

Report summary:

Warning(s): Sample amount is zero. Absolute amounts calculated

Instrument run log:

Not ready:
External device
at time 0.00

